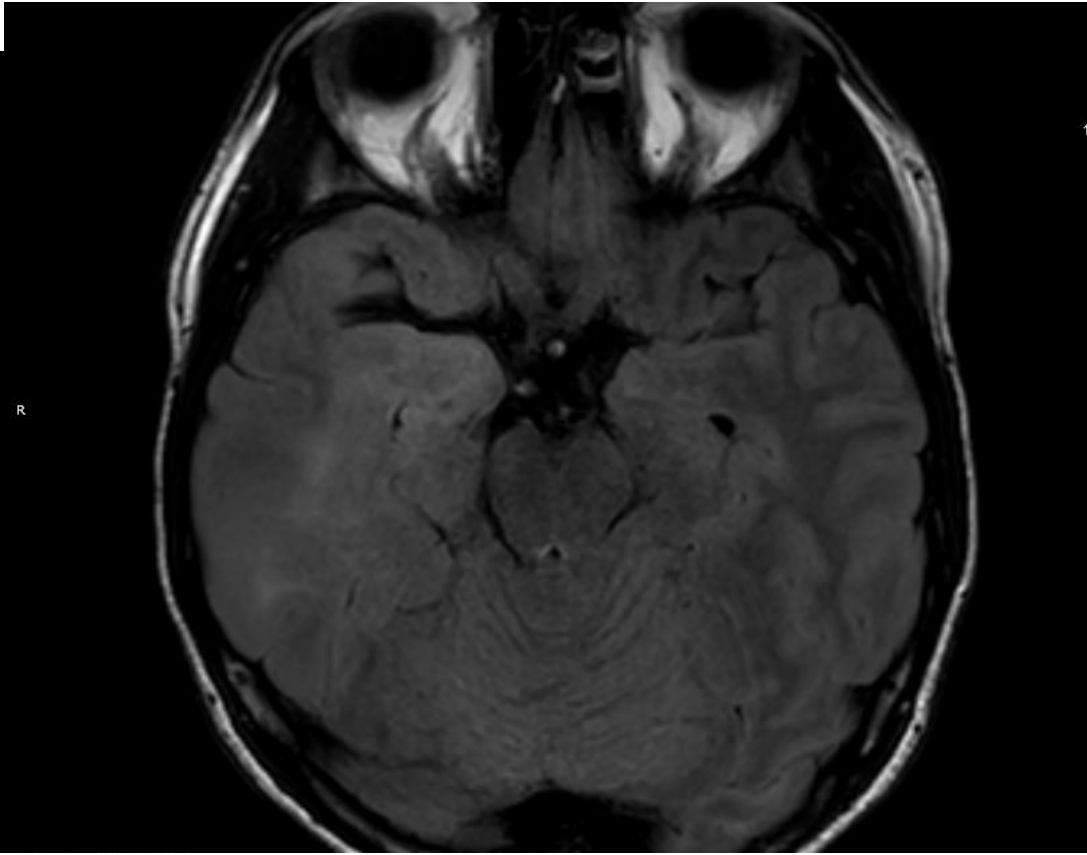


Diffusion

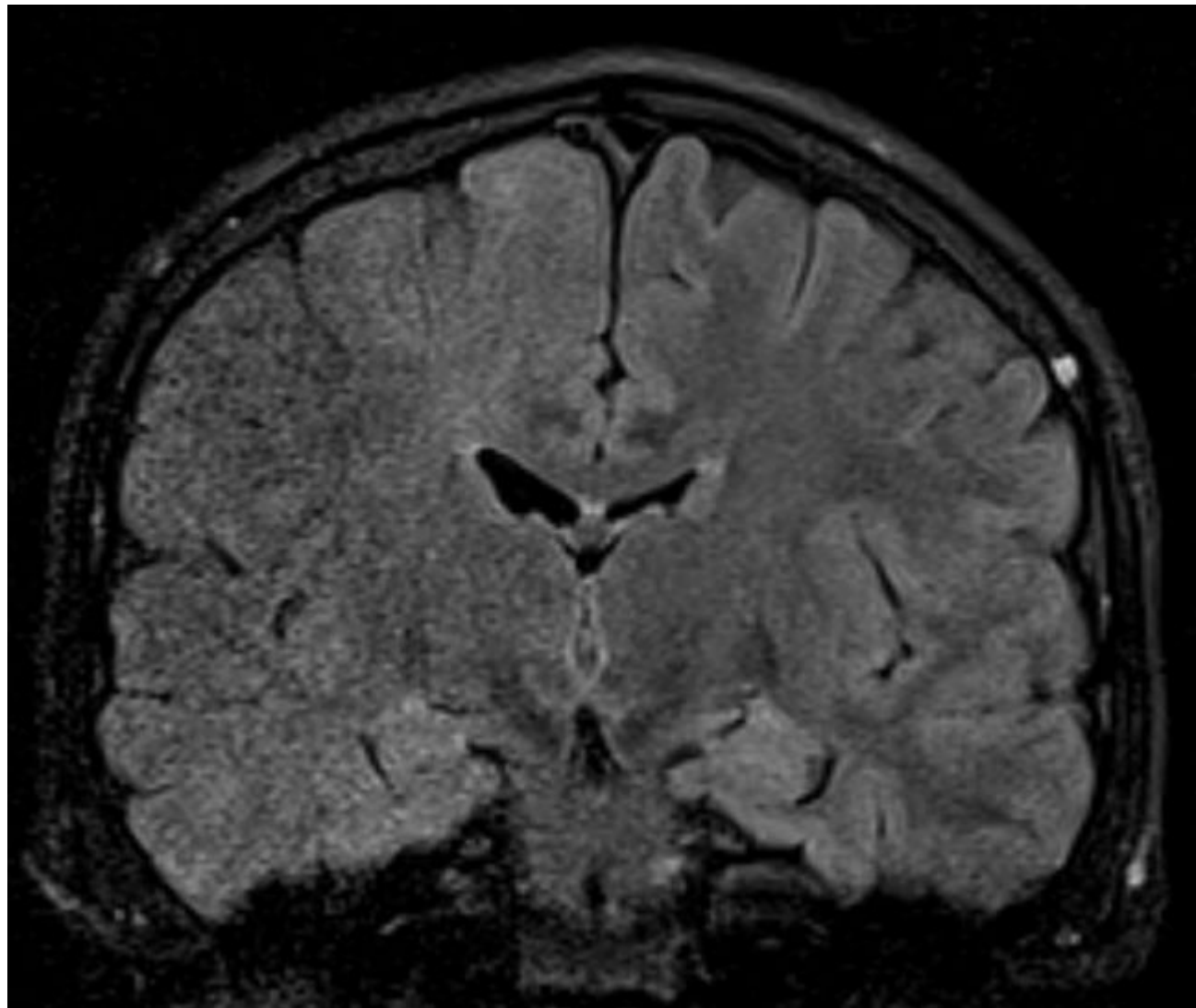


FLAIR

MRI at time of presentation (following 40 minutes of status epilepticus)



- FLAIR MRI at time of presentation (following 40 minutes of status epilepticus)
- Nothing enhanced with contrast



- MRI from 1 year prior, at onset of seizures
- Image is grainy, but appreciate subtle FLAIR changes in R hemisphere